

TIP TOP Oberflächenschutz Elbe GmbH

INDUSTRIAL CORROSION PROTECTION



Industrie



High quality systems from a single source

TIP TOP OBERFLÄCHENSCHUTZ ELBE GMBH

TIP TOP Oberflächenschutz Elbe GmbH, situated in Lutherstadt-Wittenberg and Warstein, is a fully owned subsidiary of **REMA TIP TOP GmbH**, and the specialist on matters regarding corrosion protection. New standards are repeatedly being set with **REMA TIP TOP** corrosion and wear protection products.

TIP TOP Oberflächenschutz Elbe GmbH has been a leading specialist company for all rubber lining and coating work for many years. The services provided range from the preparation of the surface to be treated, to the application of **REMA TIP TOP** rubber lining and coating materials and include the external coating of components. The vulcanization of workshop rubber coatings is carried out in modern hot-air autoclaves.

TIP TOP Oberflächenschutz Elbe is a recognised partner for many branches of industry in the area of rubber and PU coating of drums and rollers.

The materials from the **REMA TIP TOP** product line used for corrosion protection are all developed in house and exhibit high chemical, thermal and mechanical resistance. Our experienced application technicians ascertain which materials and processing techniques are optimal for any given conditions – project-related and on-site if appropriate. Thus they ensure that each protective system can optimally fulfil its task and will contribute to the economical and long-term effective operation of your installation.

A further advantage of the **REMA TIP TOP** product line is that the various corrosion protection systems are all produced within our own group of companies at locations in Lutherstadt-Wittenberg and Poing/Munich. The high quality standard is thus assured from start to finish – from product development, to production and to application.





Five different product lines fulfil a wide range of requirements:

CHEMOLINE Soft rubber lining systems

Excellent chemical and abrasion resistance. For application, **REMA TIP TOP** offer numerous bonding systems, from in-house research and production. Most **CHEMOLINE** soft rubber lining systems have a general building supervision approval (DIBt).

CHEMONIT Hard rubber lining systems

Outstanding chemical resistance against mineral acids, bases, many organic solvents and aqueous phases. For application, **REMA TIP TOP** offer suitable bonding systems, from in-house research and production. Most **CHEMONIT** hard rubber lining systems have a general building supervision approval (DIBt).

COROFLAKE Polymer coatings

Offer exceptionally good resistance against most solvents, organic and inorganic acids and alkaline media together with excellent temperature resistance. Particular mention deserves the high diffusion resistance of the **COROFLAKE** systems that ensures a long service life.

COROPUR Polyurethane coatings

Guarantee rapid curing and excellent bonding to the substrate even under the most difficult conditions (e.g. high humidity and low temperatures).

REMACOAT Polyurea coatings

Are particularly distinguished by excellent resistance to abrasion and wear, as well as their broad chemical resistance. The short curing times allow dramatic reduction of installation downtimes.

Industrial corrosion protection

WORKSHOP / CONSTRUCTION SITE RUBBER LINING

Corrosion causes damage to the order of millions of Euros each year in worldwide industry. **REMA TIP TOP** corrosion protection systems prevent such damage, maintain the value of your plant and simultaneously contribute to environmental protection.

We offer corrosion and wear protection from a single source wherever chemicals or abrasive substances cause substantial damage to plant, equipment and environments in vessels, pipework, fittings, etc.:

We protect plant and equipment

in the chemicals industry

- process vessels
- pipework
- chlorine plants (electrolysis)
- agitators
- gas scrubbers
- fittings
- pump housings
- ventilation systems
- pressure and reaction vessels

in electroplating plants

- baths
- racks
- filter vessels
- settling tanks
- scouring barrels

in water and wastewater treatment plants

- reaction towers
- anion and cation exchangers
- filter vessels
- agitator blades
- centrifuges
- aeration tanks

in power stations

- flue-gas desulphurisation systems (FGD)
- thickeners
- fans
- piping systems
- chimneys
- centrifuges

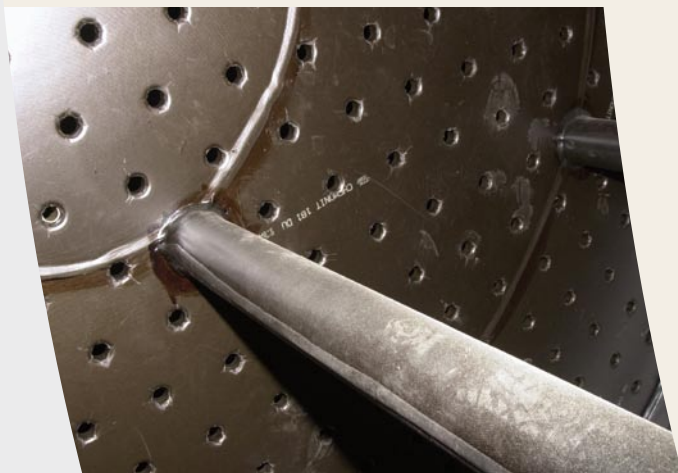
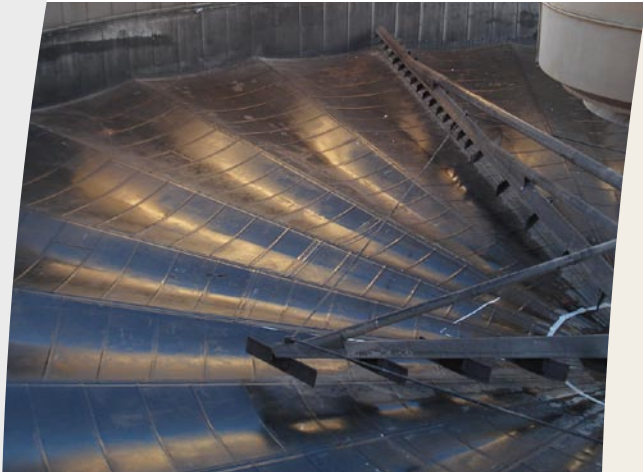
in waste incinerators

- flue-gas desulphurisation systems (FGD), vessels and pipework

in the storage and transport of aggressive chemicals

- tanks
- transport containers for road and rail

in shipbuilding



In our workshops and at construction sites, work is carried out in defined and optimized steps and at the highest quality level at each stage of the operation,

so that we can always guarantee our customers perfect performance of the lining.



Another important part of the **TIP TOP Oberflächenschutz Elbe** product range are the various lining systems.

COROFLAKE

Polymer resistant to highly aggressive chemicals. These flake and laminate coatings are predominately used for the lining of chimney flues tankage. Due to their extraordinary high temperature resistance they are also applied wherever other lining systems fail.

COROPUR

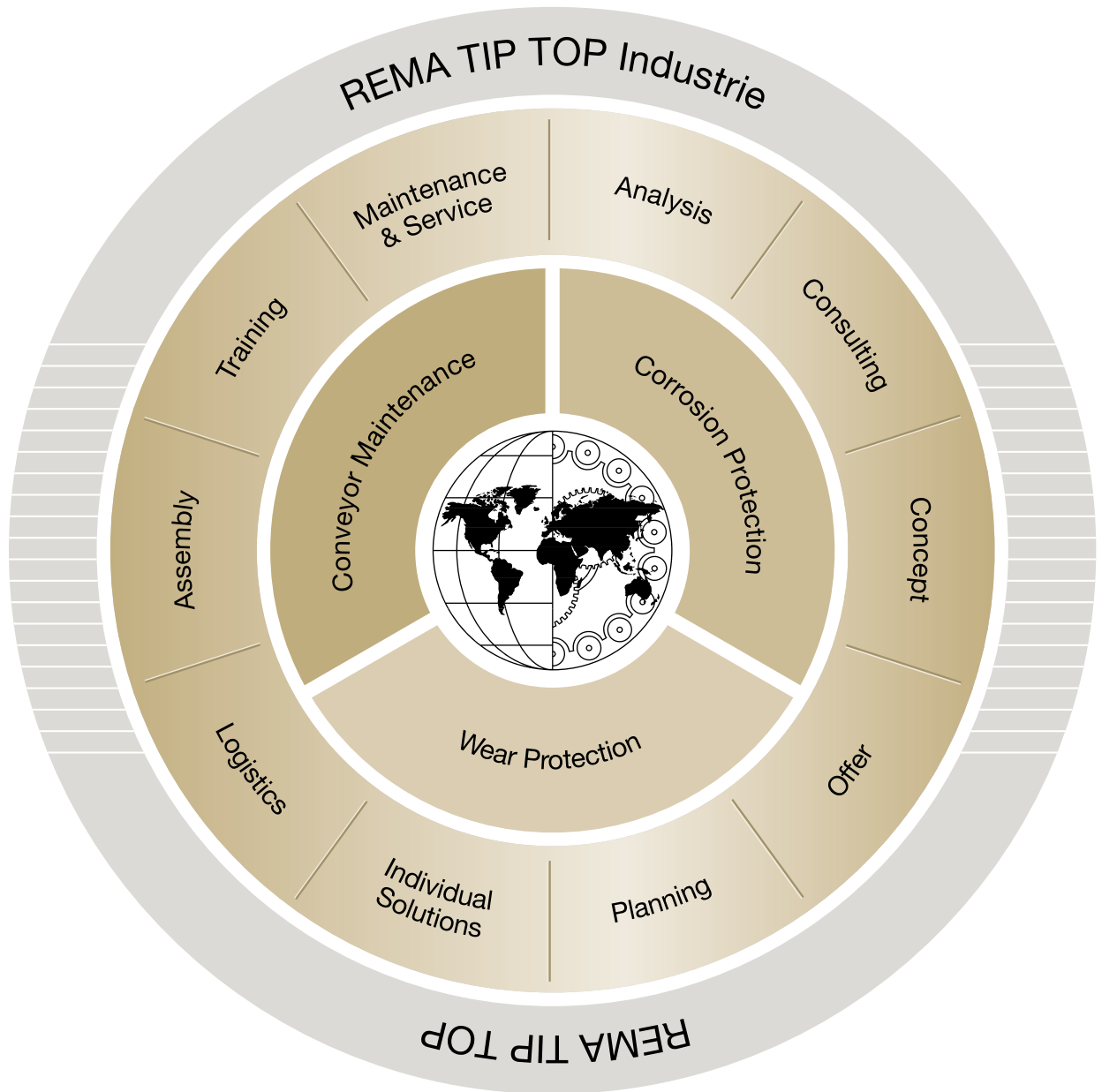
Single component, moisture-hardening polyurethane systems for long-lasting corrosion protection. These systems have decisive advantages, as **COROPUR** can be applied in extreme environmental conditions (air humidity up to 99 %, temperatures down to freezing point).

REMACOAT

Two-component, solvent-free lining systems based on polyurea with excellent corrosion and wear resistance. Characteristics that distinguish **REMACOAT** and make it suitable for a wide range of applications are low permeability and exceptional abrasion and wear resistance.

Our service is your success

OUR SERVICE CYCLE



The technological sequence off rubber lining application in our workshops and at the construction site

- Advice, development, selection of materials
- Testing of semi-finished and finished products to metal surface requirements acc. to DIN EN 14879-1
- Construction design
- Suitability of the design for lining
- Stripping of existing lining as necessary and subsequent neutralisation of the surfaces
- Surface treatment acc. to DIN EN ISO 12944-4 and EN ISO 8503-2 with quality control of the surfaces
- Application of the bonding agent – quality control
- Application of the rubber lining acc. to DIN 28055
- Workshop rubber lining (vulcanization in autoclaves)
- Site rubber lining including finishing with finishing of sealing surfaces
- Check and control of the lining thickness
- High voltage spark test (holiday detection)
- Testing the shore hardness and the bonding with building-attendant sample plates
- Final control and certification
- Packaging and despatch
- After-sales service

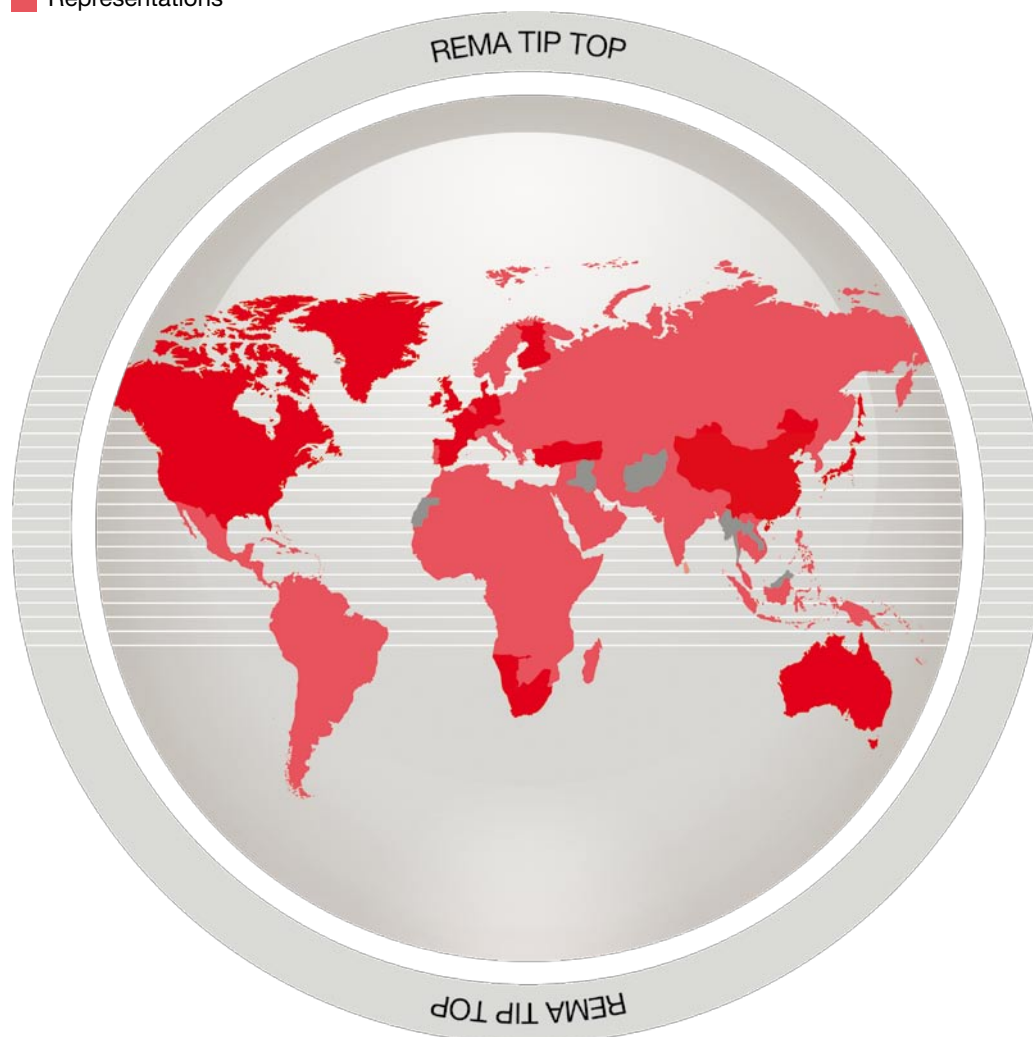
REMA TIP TOP

REMA TIP TOP – Certified Top Quality

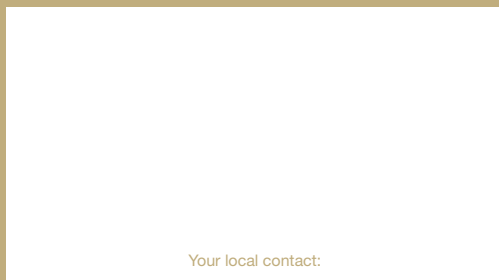
The corrosion resistant materials offered by **REMA TIP TOP** are manufactured in our own production facilities utilising state-of-the-art processing technologies. Our stringent quality assurance measures (DIN EN ISO 9001 Certification) guarantee that all products and techniques will comply with the respective country-specific regulations and standards, and in some cases, will even greatly exceed these. The implementation of these measures is assured by our trained technical staff throughout the entire production process, from the time of order through delivery and after-sales service.



- Subsidiaries
- Representations



ONE BRAND – ONE SOURCE – ONE SYSTEM



Your local contact:

582 1231 - VII.08 Printed in Germany

TIP TOP Oberflächenschutz Elbe GmbH

Dessauer Strasse 125

Phone:

Fax:

www.tiptop-elbe.de

www.rema-tiptop.com

06886 Wittenberg/Germany

+49 3491 635-50

+49 3491 635-552

info@tiptop-elbe.de

info@tiptop.de

